

1462 Strongs Ave
Stevens Point, WI 54481

715-346-1316 (phone)

715-346-1323 (fax)

<http://portage.uwex.edu>



PORTAGE COUNTY UW-EXTENSION

2016 ANNUAL REPORT

\$2.54

This is the value generated
for Portage County
residents from each dollar
invested in UW-Extension.

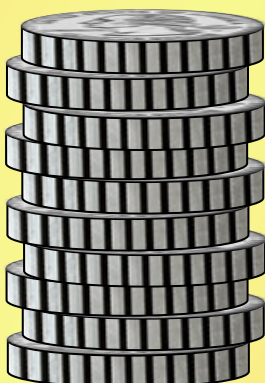
RETURN

INVESTMENT

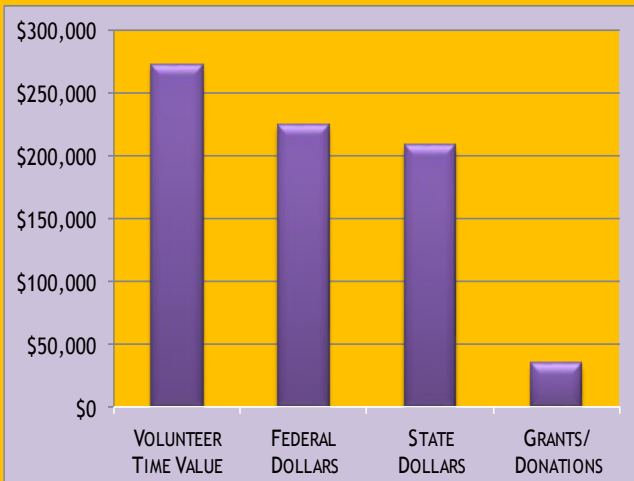


\$290,724

(projected 2016 actual)



\$739,120



THE STORY OF EXTENSION IS
REALLY THE STORY OF YOU.

This report is designed to highlight the impact **you made** on the families of Portage County last year, thanks to your investment in the University of Wisconsin-Extension and its programs.

I invite you to read about our efforts to help local farmers protect water quality in the Mill Creek Watershed, to expand STEM education through the summer youth garden program, to pioneer a study on high-speed internet needs in our county, to educate families on food safety, and to bring local organizations together to end hunger in central Wisconsin.

We are proud of what we accomplished this year thanks to your support, and are more driven than ever to impact lives as UW-Extension transitions to a more mobile, digital, and cost-effective model that we call the *nEXT Generation*.

Thank you for making our work possible.

Connie Creighton

UW-Extension Portage County

4-H Youth Development Agent/Dept. Head

connie.creighton@ces.uwex.edu

<http://portage.uwex.edu>

AGRICULTURE AND NATURAL RESOURCES

\$42,625 IN GRANTS FOR THE MILL CREEK WATERSHED!

Ken Schroeder has partnered with the Farmers of Mill Creek Watershed Council to bring **\$42,625** in grants over two years to Portage County, which will be used to educate local farmers about the potential of “**cover crops**” to save money and protect our water. Cover crops are crops that are planted to

absorb nutrients in soil that might otherwise leach into groundwater, rivers, or lakes. They can also save money for farmers and help protect the environment by reducing the need for herbicides and pesticides. With new equipment and plenty of seed, Ken and the local ag industry are running

scientific experiments to learn how effective cover crops can be in our local soil. It's a research-based project led by producers and UW-Extension to serve local industry!

Mill Creek Watershed

PESTERING LOCAL PESTS!

The Emerald Ash Borer lays eggs beneath the bark of ash trees, producing larvae that damage the wood. When this pest invaded Portage Co. in April, Ken worked with local governments and foresters to educate residents and business owners about how they might diagnose an EAB infestation and attempt to control it. Accompanied by an exploding Japanese Beetle population, UW-Extension has been busy helping residents manage invasive insects!



FOSTERING FARM SAFETY!

Farm Safety has been a major concern of the ag industry, and Ken works actively to protect this generation of farmers and the next through education and outreach. In 2016, Ken partnered with Riesterer & Schnell and Service Motor Company to certify 11 youth in farm and tractor safety. On September 8, Ken also hosted an Extension video seminar on manure gas and confined spaces. Ken hopes to expand farm safety education in future years through a partnership with the Ag Safety Connection program.



Growing Gardeners

Ken supervises the Portage County Master Gardener Volunteers, helping to maintain 20 community gardens, providing horticulture education in schools, and sponsoring \$2,500 in scholarships and grants. With 74 active members, associates, and interns, the Master Gardeners are only expected to grow after 2017 trainings!

4-H YOUTH DEVELOPMENT

370

the number of youth enrolled in the
Portage County 4-H program in 2016.

121

the number of adults serving Portage
County communities through 4-H.

7,797

the number of self-reported
community service hours contributed
by 4-H youth and adults in 2016.

\$175,277

the value of those service hours



University of Wisconsin - Extension

ROOTS, SHOOTS, FRUITS, AND STEM!

Science, Technology, Engineering and Math are essential skills for youth to develop in a competitive job market. In 2016, Connie Creighton and the Portage County FoodWise program were awarded a \$4,999 grant to expand STEM education for the summer youth gardens. Located at Boys & Girls Club sites in Stevens Point and Junction City, as well as Madison View, the gardens engage youth in learning about plants, nutrition, and more!

154 youth strengthened their STEM skills with the 4-H summer garden program in 2016!

GROWING OUR FUTURE LEADERS!

Connie is dedicated to training Wisconsin's next generation of leaders! In 2016, she worked with other counties and 4-H teens to provide three overnight camping experiences with a combined total of 109 youth, who reported learning about teamwork, listening to others, kindness, friendship, and protecting nature.

In the fall, Connie visited 4-H club meetings and provided education to families on digital technologies and parliamentary procedure, which 4-H youth use to conduct their monthly meetings.

94%

of 4-H Club Officers felt more comfortable fulfilling their duties, including helping to run meetings and orienting new members, after attending Connie's county officer training



PORTAGE COUNTY UW-EXTENSION

BY THE NUMBERS . . .

\$42,625

in grants for UW-Extension and the Farmers of the Mill Creek Watershed to study the effects of cover crops on soil moisture and temperature in Portage Co. \$23,901 of the awards will be used to keep the project going into 2017.

3,018

youth exhibits displayed at the Rosholt Fair, made possible by the UW-Extension 4-H Youth Development program!

Mill Creek Watershed

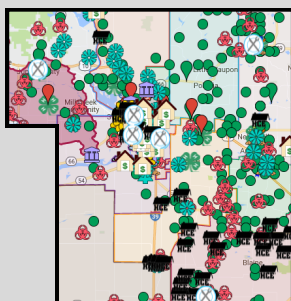
*Boys + Girls Club
Partnerships*

72

farmers and workers were able to obtain or renew their private pesticide applicator license thanks to Ken Schroeder's UW-Extension Agriculture programs!

**THERE'S A LOT MORE
WHERE THIS CAME FROM...**

Visit <http://portage.uwex.edu> to view an interactive map that will show you where Portage County UW-Extension changes lives in your community!



*Pesticide
Licenses*

55

total campers attended 4-H Junior Camp at the Central Wisconsin Environmental Station in the Town of New Hope. Youth grades 2-4 developed leadership and life skills during this joint effort with Waupaca, Lincoln, and Taylor Counties.



Rosholt Fair



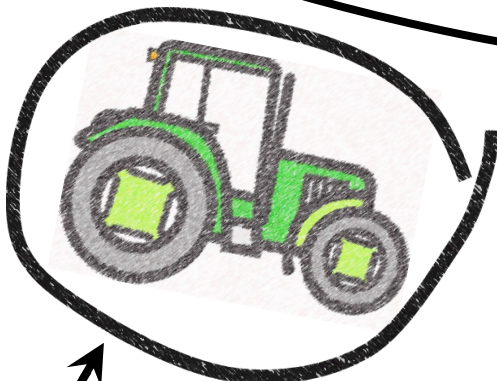
4-H Camp

154

Boys & Girls Club youth participated in the summer youth garden program in Stevens Point and Junction City. This joint effort by UW-Extension 4-H, and FoodWise taught Portage County youth science, technology, engineering, math, and nutrition skills during the summer of 2016.

70%

of Home and Community Education (HCE) program members are from Almond-Bancroft area, strengthening Portage County families through continuing education in inclusive, social settings! Sherry Daniels supports 39 total HCE members.



11

youth received tractor and machinery safety certification from the 4-H and Ag Agents, as well as five community volunteers.

ASSESSING HOUSEHOLDS' INTERNET NEEDS

With funding from the Portage County Board of Supervisors, Nathan Sandwick partnered with the Broadband Task Force for Portage County and the University of Wisconsin-River Falls to conduct a survey on high-speed internet needs. Preliminary results are available, and the Task Force hopes that the data can be used to guide development of high-speed internet and encourage local providers to apply for grants to extend their services to Portage County residents. Working relationships developed over the course of the effort also helped set the stage for a successful Broadband Expansion Grant application whereby one local internet service provider was awarded \$150,000 to extend 16 miles of fiber to offer expand high speed internet service to households in a rural area of the county which had been unserved.



RESEARCHING ENERGY EFFICIENCY

In 2016, Nathan wrote Portage County's 2015 energy report showing that energy efficiency improvements achieved among buildings operated and controlled by Portage County since 2009 have cut those facilities' annual electricity use by approximately 763,000 kWh (15%) and annual natural gas consumption by an estimated 27,500 therms (11%). At 2015 prices for electricity and natural gas, these energy savings equate to an annual cost savings of approximately \$80,000. Nathan also convened a workshop on Property Assessed Clean Energy (PACE) financing, which some counties are beginning to extend as an option for property owners pursuing efficiencies and equipment that help lower costs.

MAKING ENDS MEET!

Throughout the fall of 2016, Nathan met with groups of local government leaders, non-profit workers, employers, tradespersons, and underserved/disabled individuals to discuss living wage issues. With a \$2,220 grant from the UW-Extension North Central Region, Nathan was able to offer eligible participants child care and assistance to ensure that voices from all economic backgrounds had a chance to be heard. From transportation and housing to job markets and childcare services, much was learned about the needs and priorities of those whose incomes leave them struggling to make ends meet. Discoveries from this process may help guide workforce development policies in order to strengthen opportunities for all Portage County residents.



FAMILY LIVING

OFFERING FREE COMMUNITY EDUCATION

Last summer's Lunch & Learn series on food preservation was well attended by a diverse audience. Participants requested further Lunch & Learn classes on Family Living topics such as healthy eating, caring for aging parents, keeping your brain fit, avoiding financial scams, and working with the Master Gardener Volunteers to provide horticulture and gardening classes.

FINANCIAL WELLNESS OF PORTAGE COUNTY

Financial Wellness coaches are community volunteers trained by Sherry to work with families, giving them encouragement, sharing resources, and helping them through some basic goal setting and decision making. Clients are referred to the program through a variety of community partners, including CAP Services Work N' Wheels, Operation Bootstrap, financial institutions, professional counselors, and area churches. In 2016, nearly 30 individuals and families were matched with our volunteer coaches.

HCE ~ WISCONSIN BOOKWORMS™

Locally, the Portage County Association for Home & Community Education members have read books to over 4,000 preschool children. This project focuses on children from disadvantaged households in Portage County. Every month, each child is given a copy of the book to keep., with over 18,500 distributed since 2001. Sherry serves as the advisor for all HCE programming throughout Portage County.



UWSP STUDENT FINANCIAL WELLNESS

College debt has been a hot topic in the news this past year. Sherry has been collaborating with UWSP for the last three years to help students prepare for post-college financial wellness by training students as peer-to-peer Financial Wellness Coaches.

After participating in the coaching training, Sherry and UWSP faculty secured an on-campus location for financial wellness in the College of Professional Studies Building. Students now offer their peers financial coaching on a walk-in basis, with set hours of availability each week. Additionally, presentations at the dorms and student center are held each semester.

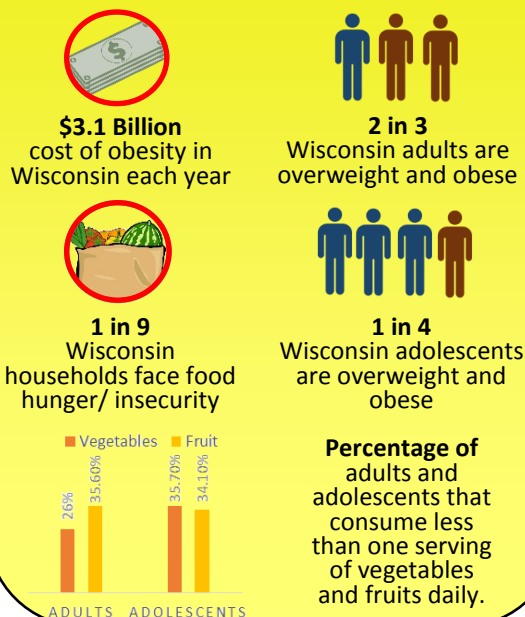




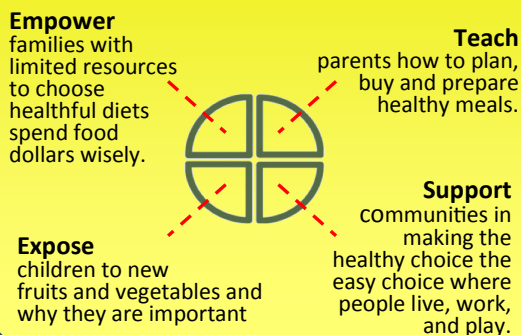
WHY THE NEW NAME?

FoodWise has provided nutrition education in your community for years as the federally funded Wisconsin Nutrition Education Program (WNEP), helping local families live healthful and active lives no matter their income constraints. With our new name, we will increase community awareness and further engage families with our powerful curriculum.

THE CHALLENGE



THE SOLUTION



THE RESULTS

THE REACH



BRIEF SNAPSHOTS OF 2016 PROGRAMMING IMPACT

A series of five lessons was taught to 61 5th-grade students at an income-eligible school. Afterwards, 48% of students reported making lower fat choices when eating out at fast food restaurants as a result of the lessons. 64% reported making changes in what they drink to be a lower sugar choice. 69% of students reported sharing something they learned from the lessons with their family and 90% reported learning something new from the lessons.

25 Parents taking part in a community parenting class received education on the importance of family mealtimes. 72% listed something they intend to change about family mealtimes in their home because of the lesson.

Interactive Shopping Matters Tours were conducted with 25 WIC participants. As a result of the tour, 76% reported planning to use what they learned about unit pricing on their next shopping trip and 86% reported that they planned on reading and comparing food labels to make healthy choices on their next shopping trip.

13 women at a domestic violence shelter participated in a series of lessons focusing on eating healthy on a budget. 77% learned at least one new way to get more for their food money, 85% intended to eat more fruits and vegetables, and 54% learned at least one new meal planning strategy they plan to use in the future.

Sources: Trogon et al. State and Payer Specific Estimates of Annual Medical Expenditures Attributable to Obesity. Obesity (2011); Coleman-Jensen et al. Household Food Insecurity in the United States in 2014. ERR-194; U.S. Department of Agriculture, Economic Research Service, September 2015.

UW Extension
University of Wisconsin-Extension



Jill Hicks
FoodWise Administrator

715-346-1664
jill.hicks@ces.uwex.edu

UW Extension
University of Wisconsin-Extension



Penny Schmitt
FoodWise Nutrition Educator

715-346-6254
penny.schmitt@ces.uwex.edu

UW Extension
University of Wisconsin-Extension



Mary Higley
FoodWise Nutrition Educator

715-346-6262
mary.higley@ces.uwex.edu